



DISTRICT HEALTH DEPARTMENT #10

ANNUAL REPORT

OCTOBER 1, 2006 THROUGH SEPTEMBER 30, 2007

SERVING THE COUNTIES OF:

CRAWFORD
KALKASKA
LAKE
MANISTEE
MASON

MECOSTA
MISSAUKEE
NEWAYGO
OCEANA
WEXFORD

TOTAL POPULATION: 266,652



District Health Department #10 Mission Statement

The mission of District Health Department #10 is to promote and enhance the health of all individuals through education, prevention, intervention and protection of the environment.

BOARD OF HEALTH MEMBERS

Crawford County:

Shelley Pinkelman
Kathy Rogers
Scott Hanson (Alt.)

Manistee County:

Janice McCraner
Kathy Fenstermacher
Ed Haik (Alt.)

Newaygo County:

Julia Bird
Daniel Powell
Stanley Nieboer (Alt.)

Kalkaska County:

Louis Walter
Alan McCullen
Robert Crambell, Jr. (Alt.)

Mason County:

James Pinkerton
Jerome Rybicki
Robert Genson (Alt.)

Oceana County:

Evelyn Kolbe
Larry VanSickle
Denny Powers (Alt.)

Lake County:

Mary Lemm
James Clark
Nicolette McClure (Alt.)

Mecosta County:

Ray Steinke
Ruth Hess
Jerry Williams (Alt.)

Wexford County

Scott Reagan
Mike Stump
(no alternate)

Missaukee County:

Hubert Zuiderveen
Susan Rogers
Dan Waller (Alt.)

ADMINISTRATIVE STAFF

Linda VanGills, Health Officer

Dr. James Wilson, D.O., Medical Director

POINTS OF INTEREST

The department completed a week long accreditation visit in July 2007, 202 program indicators were reviewed and only two were missed. The department was awarded accreditation by the Michigan Local Public Health Accreditation Commission.

Leadership achieved a long term goal of passing a unified Sanitary Code for all ten counties.

Immunization rates for the agency and community levels continue to climb and are above the State and National levels.

The WIC resident caseload continued to grow; an additional 227 clients were served bringing the total caseload to 8,539.

The DHD#10 Colorectal Cancer Screening Program screened 366 individuals and had 297 return the FOBT Kit, for a return rate of 85% the national average is 28%. Health care providers donated \$58,107 of services to this preventive health program.

Family planning services were expanded to include all ten counties: This was accomplished by the State requesting bids for the family planning program and the establishment of the Plan First Program.

Public health threats continue to challenge the department: A total of 13 bats tested positive for rabies, an intensive follow-up was done in a community where a student died of bacterial meningitis, and MRSA concerns continued to grow.

WEBSITE: WWW.DHD10.ORG

Public Health Workforce

Full Time Employees = 126 Part Time Employees = 21 Contractual Employees = 23

Public Health employs a vast work force made up of nurses, health educators, environmental sanitarians, social workers, dietitians, case managers, support staff, clinic technicians, paraprofessionals, computer technicians, accountants and administrative assistants.

Years of Service Awards – 2007

Years of Service	Base County	Position
30 Years of Service Lin Brown Mary Miller	Newaygo County Mason County	Environmental Health Sanitarian Support Staff
25 Years Doreen Byrne	Missaukee County	Public Health Nurse
20 Years Jolee Aberegg Julie Dillingham Randy Earnest Maureen Goulet Linda Holmes Jim Pankiewicz	Mason County Oceana County Mecosta County Mason County Manistee County Newaygo County	Family Planning Tech Administrative Assistant Environmental Health Sanitarian MIHP Nurse WIC Nurse Environmental Health Sanitarian
15 Years Holly Elliott Linda Wiedman Anne Young	Mecosta County Mason County Wexford County	Office Support WIC Clerk/Tech MIHP Mgr/Immunization Coordinator
10 Years Sean Allen Becky Haight Holly Joseph Robin McMenis	Mason County Newaygo County Mason County Kalkaska County	Management Information Systems Lead AP Reimbursement & Billing Clerk Health Educator WIC Nutritionist
5 Years Angel Abshire-Shadoff Julie Burger Kim DePeel Amy Eling Patti Gasper Joy Jaquish Sue Owens Terri Pontz Tom Reichard Rebecca Seaney Sheryl Slocum Pennie Thebo Kelly Wawsczyk Tori Weitzel	Wexford County Newaygo County Newaygo County Missaukee County Wexford County Newaygo County Crawford County Lake County Wexford County Oceana County Wexford County Mecosta County Newaygo County Wexford County	WIC Dietitian MIHP Nurse Clerical Team/EH Environmental Health Sanitarian Hearing/Vision Technician MIHP Social Worker Nurse Practitioner MIHP Social Worker Environmental Health Director Clerical Team Family Planning Coordinator WIC Clerk/Tech WIC Clerk/Tech Environmental Health Sanitarian

The department values the longevity of our work force. These individuals have achieved key longevity milestones in 2007

District Health Department #10
Local Public Health Operations (LPHO) Services - FY 2006-07

Onsite Sewage	Crawford	Kalkaska	Lake	Manistee	Mason	Mecosta	Missaukee	Newaygo	Oceana	Wexford	Total
# of septic permits & evaluations	146	196	185	222	180	311	116	390	289	165	2,200
# of denied permits	0	1	0	0	0	0	0	3	2	0	6
# of final inspections	93	163	178	181	164	226	93	315	292	140	1,845
# of septic failures	55	36	19	71	50	68	30	99	5	58	491
Water Program											
# of well permits	158	193	175	210	199	300	151	373	250	152	2,161
# of well inspections	95	47	100	79	64	82	57	74	70	93	761
Food Service											
# of food operation inspections	124	97	91	224	239	261	81	311	210	318	1,956
# of temporary food booth inspections	16	24	43	67	75	78	37	39	32	74	485
# of reported foodborne illnesses	4	2	2	1	6	5	2	7	2	11	42
Immunizations -Childhood Immunization Compliance 19-35 months	90%	91%	90%	83%	83%	78%	80%	78%	77%	84%	83%
# Vaccines Given	1,201	1,060	324	1,373	2,424	2,299	814	947	713	1,986	13,141
# Vaccines Distributed to Private Providers	2,613	2,554	1,320	3,218	6,761	7,310	0	9,812	3,955	10,685	48,228
# Influenza Vaccine Given	300	1,118	834	1,568	1,830	847	1,156	1,075	1,849	1,049	11,626
Hearing Program											
# Preschool Hearing Screenings	294	225	103	188	392	206	332	244	504	521	3,009
# School Hearing Screenings	297	461	256	875	1,020	1,250	380	1,909	1,035	1,124	8,607
Vision Program											
# Preschool Vision Screenings	248	239	115	186	393	215	280	268	660	515	3,119
# School Vision Screenings	746	974	373	1,280	1,733	2,411	934	4,077	1,729	2,112	16,369
STD Services	44	51	28	27	12	239	30	90	21	76	618
Communicable Disease											
# of Communicable Disease Services	206	251	77	364	155	501	179	335	379	629	3,076
# TB Skin Tests Given	73	131	63	256	233	709	127	309	188	318	2,407
# TB Patients on Prophylaxis	4	1	0	9	1	15	0	5	47	5	90

District Health Department #10
Communicable Diseases - FY Year End Report - Previous Year Comparisons

Program/Services	2007	2006	2005
Flu Like Diseases	8,867	9,575	11,105
Chlamydia	387	469	417
Chickenpox (Varicella)	174	126	45
Hepatitis C (Chronic)	110	93	97
Gonorrhea	41	72	79
Campylobactor	31	17	16
Salmonellosis	25	20	28
Giardiasis	17	23	20
Meningitis (Aseptic)	16	23	25
Streptococcus pneumoniae Inv.	11	8	0
Rabies, Animal	11	3	1

Flu-like Diseases continue to be the highest reportable disease. Outreach efforts have been increased to reach families with children. Flu vaccine was distributed early in October 2007 for both the private and public sector.

STD's showed a decrease from the 2006 statistics. Education and the expansion of Family Planning Services contributed to this decrease.

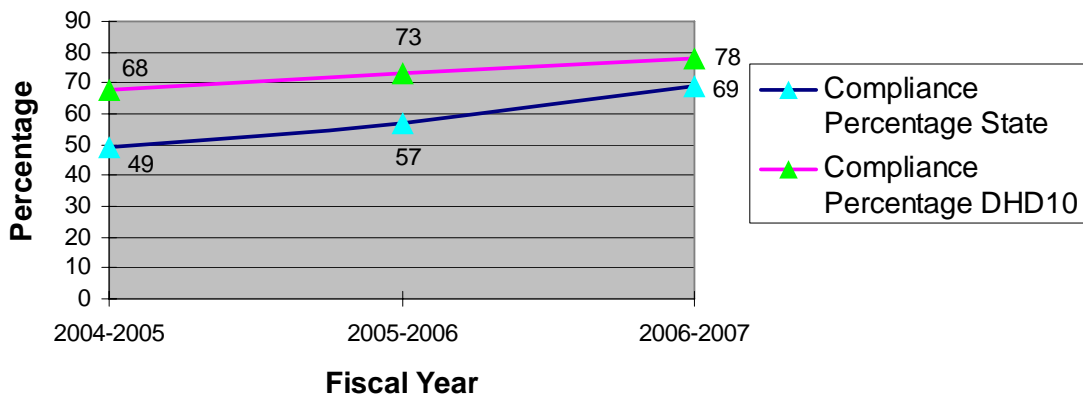
G.I. illness continues to be monitored. Norovirus outbreaks continue to be a concern statewide. Increased public education regarding preventative measures was conducted.

District Health Department #10 saw an increase in the number of positive rabid bats in 2007, this was true statewide. Public education and awareness of testing which resulted in more bats submitted contributed to this increase.

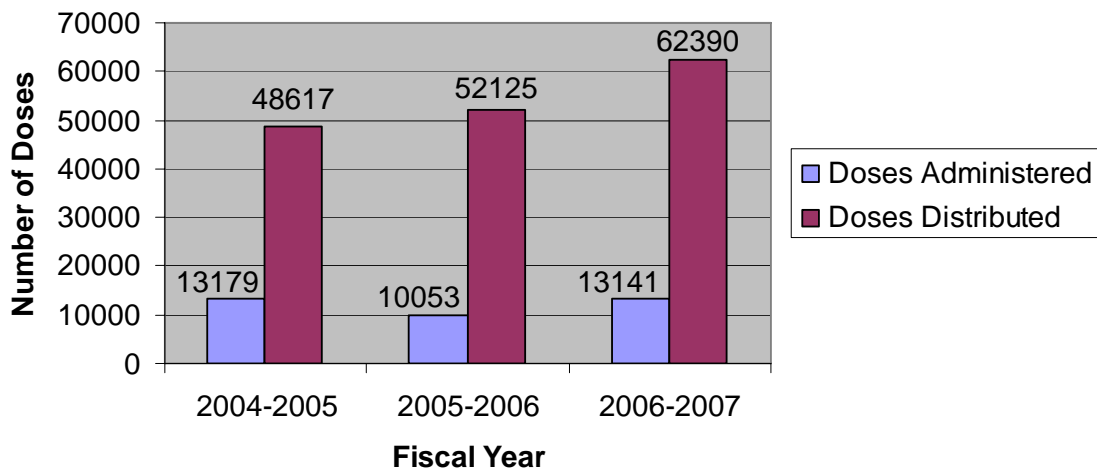
DISTRICT HEALTH DEPARTMENT #10
REPORTABLE COMMUNICABLE DISEASES FOR FISCAL YEAR 2006-2007
TOP TEN DISEASES REPORTED

DISEASE	CRAWFORD	KALKASKA	LAKE	MANISTEE	MASON	MECOSTA	MISSAUKEE	NEWAYGO	OCEANA	WEXFORD	DHD#10 TOTALS
Flu Like Disease	384	484	205	322	128	1,951	707	2,783	240	1,663	8,867
Chlamydia	13	24	25	29	38	91	15	62	35	55	387
Chickenpox (Varicella)	8	15	6	6	9	8	10	71	2	39	174
Hepatitis C Chronic	9	13	3	18	12	6	4	16	9	20	110
Gonorrhea	1	2	4	1	3	13	0	5	7	5	41
Campylobacter	1	3	1	3	5	2	5	2	7	2	31
Salmonellosis	0	1	1	0	3	5	1	6	4	4	25
Giardiasis	2	0	0	1	0	1	2	6	3	2	17
Meningitis- Aseptic	0	2	0	1	6	1	1	2	1	2	16
Streptococcus pneumoniae, Inv.	0	0	0	4	2	0	1	2	2	0	11
Rabies, Animal	0	0	0	1	1	2	0	6	1	0	11

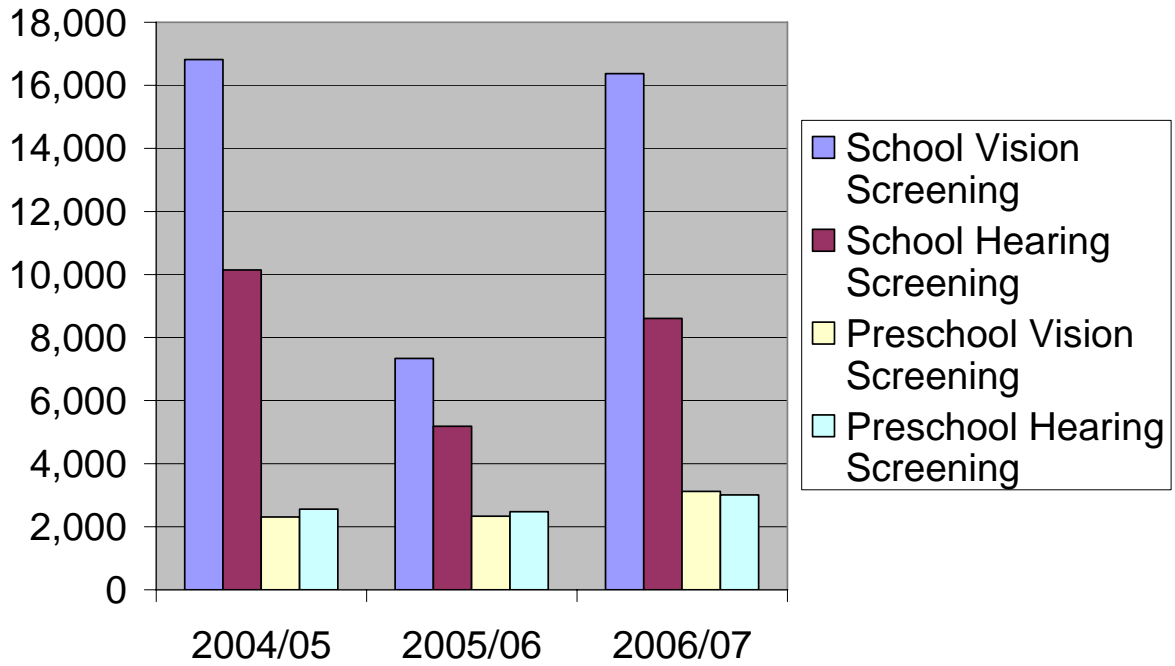
Immunization Compliance Rates 19-36 Months of Age District Health Department #10 and State Rates



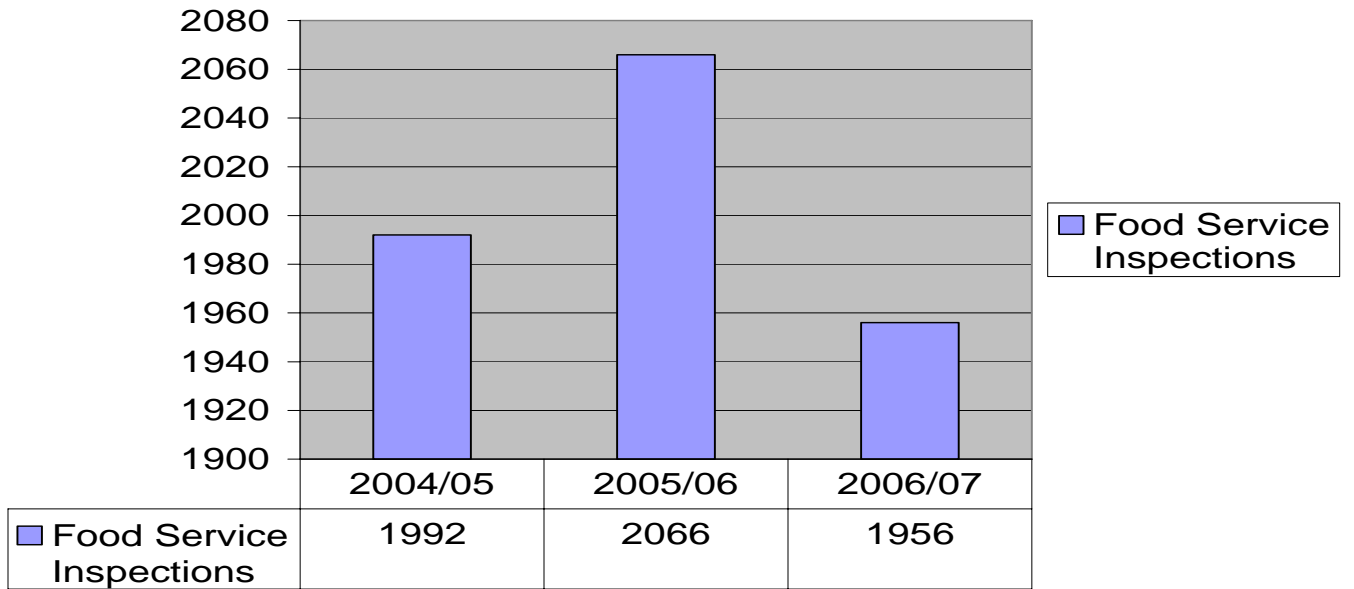
Total Doses Vaccine Distributed and Administered by District Health Department #10 2004 to 2007



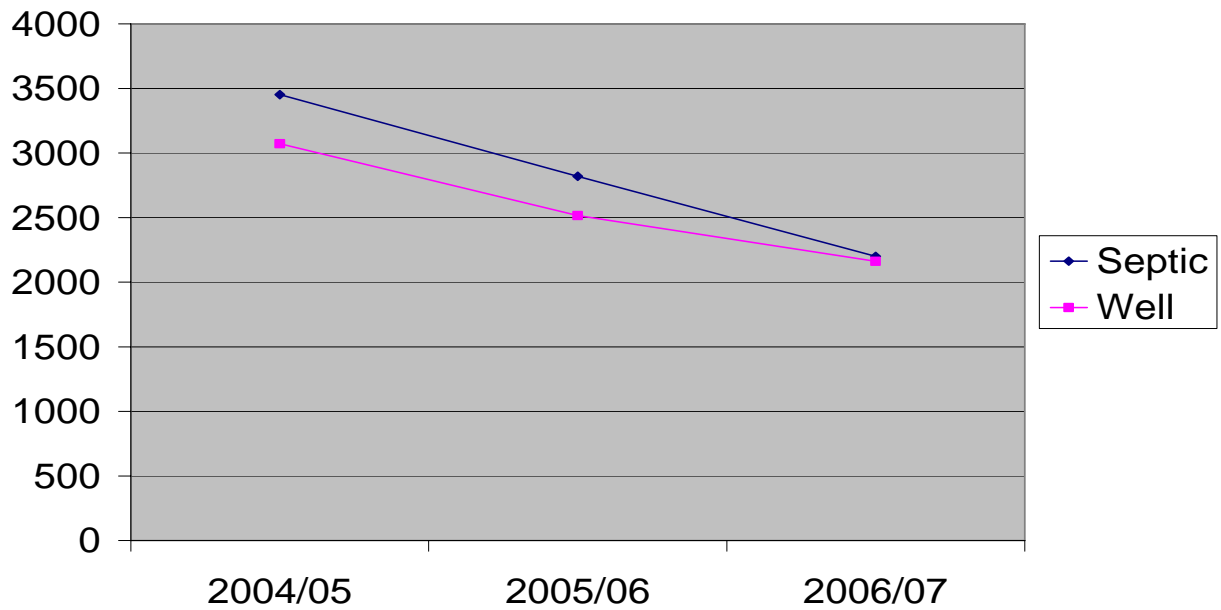
Hearing & Vision Screening



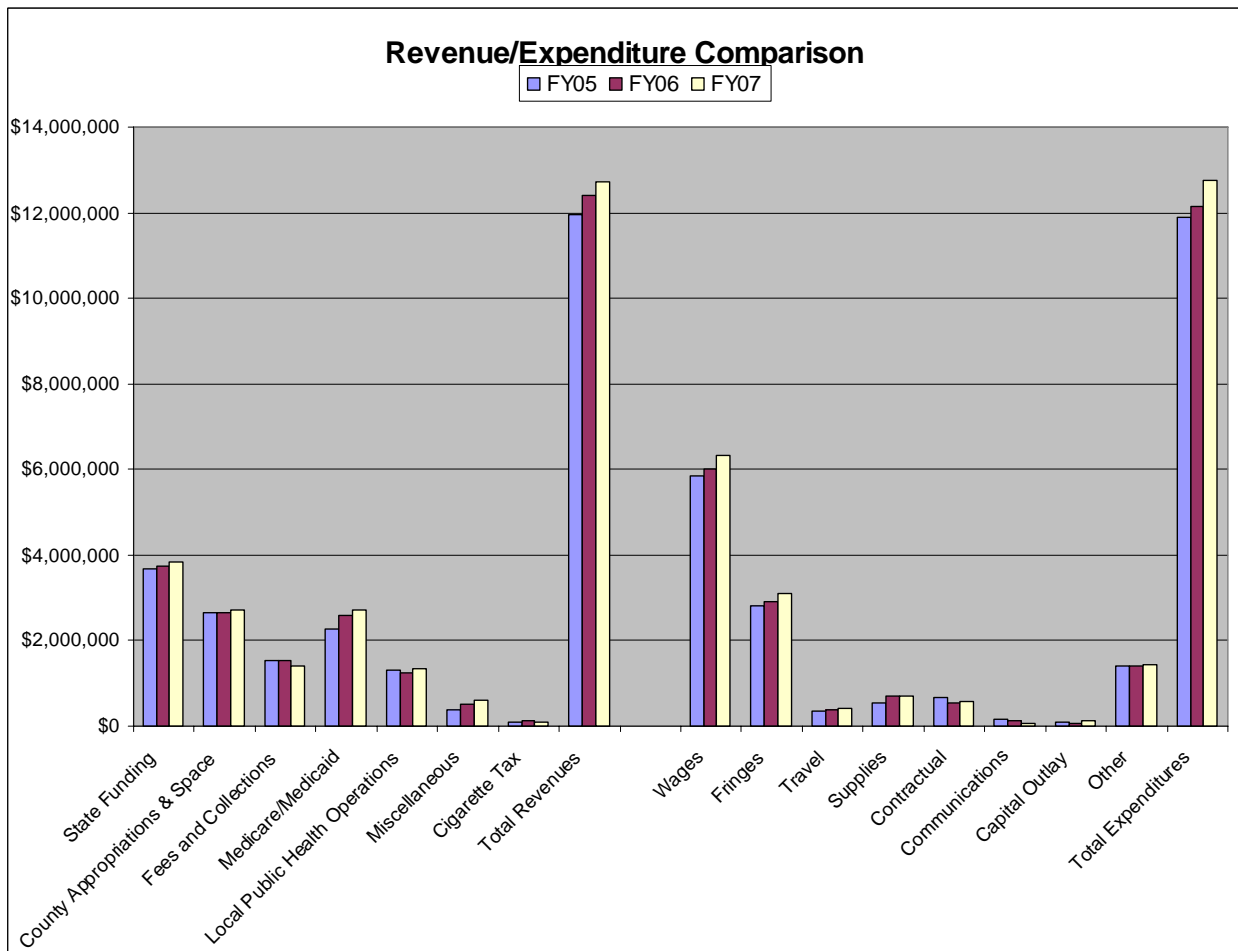
Food Service Inspections



Septic & Well Permits 04/05 thru 06/07



	Crawford	Kalkaska	Lake	Manistee	Mason	Mecosta	Missaukee	Newaygo	Oceana	Wexford	Total
Personal Health											
# of Children on CSHCS	57	95	39	87	94	140	60	207	86	220	1,085
# CSHC Services	152	269	64	145	108	95	166	176	104	688	1,967
# MSS Clients	46	59	46	60	76	124	65	95	115	138	824
# MSS Visits	265	320	277	294	476	714	374	542	606	1016	4,884
# ISS Clients	36	48	26	54	70	91	51	91	48	138	653
# ISS Visits	292	413	372	455	560	1027	762	741	308	1120	6,050
# MI Child/Healthy Kids/ MOMs Applications	0	9	0	8	0	34	1	17	21	140	230
WIC											
Average client enrollment caseload per month	403	578		598	917	1,246	311	1,817	815	1,436	8,539
Average migrant caseload per month				19	19			95	450		566
% of clients that return for services	89%	90%	93%	90%	92%	89%	90%	92%	89%	90%	90%
# of women and children who Received Project Fresh	115	165	60	180	285	285	75	915	344	315	2,739
% of women in program electing to breastfeed in early post-partum											62.61%
# of WIC children screened for blood lead poisoning	56	71	28	80	146	108	41	154	176	220	1,080



	FY05	FY06	FY07
State Funding	3,686,916.55	3,745,668.25	3,849,930.46
County Approps. & Space	2,640,857.16	2,663,150.36	2,706,290.05
Fees and Collections	1,534,845.23	1,536,339.82	1,395,273.32
Medicare/Medicaid	2,281,872.02	2,574,316.54	2,716,990.87
Local Public Health Operations	1,320,749.00	1,257,987.00	1,343,135.00
Miscellaneous	372,999.46	502,327.75	614,115.37
Cigarette Tax	103,614.33	112,589.93	106,443.75
Total Revenues	11,941,853.75	12,392,379.65	12,732,178.82
Wages	5,861,653.92	6,012,136.45	6,322,822.00
Fringes	2,820,797.04	2,906,921.79	3,100,304.00
Travel	347,176.47	386,034.16	419,523.28
Supplies	537,269.63	690,278.68	694,517.15
Contractual	685,328.47	549,696.33	589,647.99
Communications	153,971.41	118,930.69	77,403.85
Capital Outlay	87,587.31	70,971.85	123,287.07
Other	1,393,757.09	1,415,719.67	1,427,691.24
Total Expenditures	11,887,541.34	12,150,689.62	12,755,196.58
	54,312.41	241,690.03	-23,017.76

Tencon Health Plan Service Summary

Uninsured 19 - 64 at Selected Income Levels

County	Uninsured 19 - 64 at Selected Income Levels				Enrollment By County	
	<100	100-199	>200	Total	Plan A	Plan B
Crawford	326	367	465	1158	99	222
Kalkaska	341	434	559	1334	90	196
Lake	376	324	318	1018	136	125
Manistee	492	615	844	1951	155	240
Mason	593	711	957	2261	189	260
Mecosta	1420	1179	1404	4003	372	224
Missaukee	284	374	464	1122	84	123
Newago	1083	1215	1601	3899	324	315
Oceana	861	809	894	2564	141	182
Wexford	599	848	992	2439	291	383
					1881	2270
Total	6375	6876	8498	21749		
<100	6375					
100-150	3438					
Total	9813					
TENCON A	1881	2005/06		1,424		
TENCON B	2270	2005/06		2,403		
Total	4151					
% of target population covered					42.30%	
Percent of Total Uninsured Age 19-64					19.09%	

Dental Clinics North Unduplicated Count

	2005	2006	2007
Crawford	627	588	566
Kalkaska	1,219	1,358	1,322
Lake	84	113	152
Manistee	1,202	1,333	1,354
Mason	662	763	859
Mecosta	153	185	249
Missaukee	609	688	715
Newaygo	11	22	18
Oceana	45	60	68
Wexford	1,643	1,840	1,973
Total	6,255	6,950	7,276

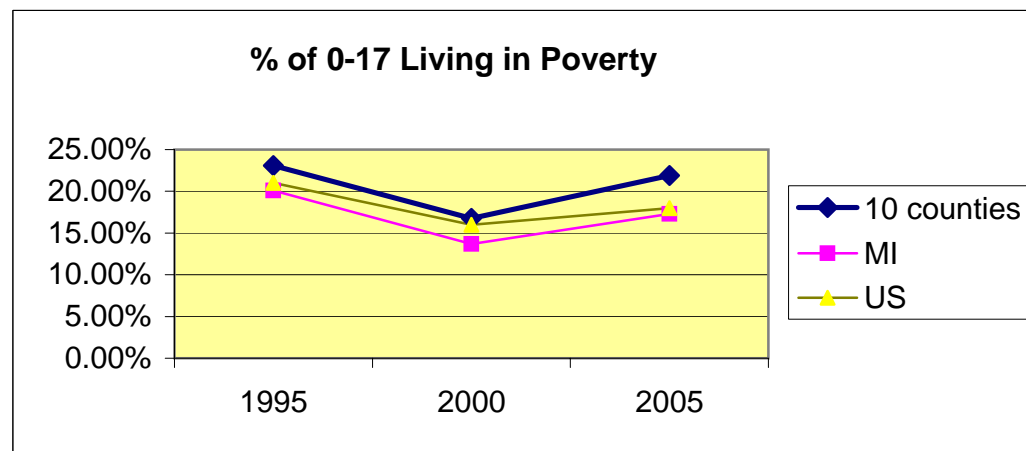
Children 0-17 Living in Poverty

	Poverty 0-17 US Census SAIPE	1995 Pop Kids Count 97-98
Crawford	780	3,466
Kalkaska	899	4,055
Lake	853	2,384
Manistee	1,313	5,174
Mason	1,542	7,131
Mecosta	2,131	8,825
Missaukee	848	3,884
Newaygo	2,524	12,891
Oceana	1,909	6,898
Wexford	1,713	8,180
	14,512	62,888

	Poverty 0-17 US Census SAIPE	2000 Pop Kids Count 2006
Crawford	703	3,419
Kalkaska	695	4,202
Lake	697	2,529
Manistee	847	5,457
Mason	1,064	6,778
Mecosta	1,630	10,124
Missaukee	622	3,865
Newaygo	2,125	13,726
Oceana	1,388	7,413
Wexford	1,206	8,039
	10,977	65,552

	Poverty 0-17 US Census SAIPE	2005 Pop Kids Count 2006
Crawford	818	3,146
Kalkaska	913	4,056
Lake	865	2,469
Manistee	953	5,168
Mason	1,173	6,318
Mecosta	2,187	9,611
Missaukee	847	3,572
Newaygo	2,422	12,928
Oceana	1,895	7,119
Wexford	1,497	7,540
	13,570	61,927

	1995	2000	2005
10 counties	23.08%	16.75%	21.91%
MI	20.10%	13.70%	17.30%
US	21%	16.00%	18%



DHD #10 BIRTHS

2006 Data based upon % of total births (Ranked best to worst)

* = worst in State

**Based upon percent of births to teens 15-19

Teens Under 20		Repeat Births Teens 15-19 **		Births to Unwed Mothers		Less than 12 yrs. of ed.		Births w/Late or no Prenatal Care		Smoked during Pregnancy		Low Birthweight Babies		Preterm Births	
Rank	%	Rank	%	Rank	%	Rank	%	Rank	%	Rank	%	Rank	%	Rank	%
State Avg.	9.6	8-Manistee	11.6	37-Missaukee	36.6	17-Mason ...	11.5	2-Kalkaska ...	1.2	State Avg. ...	13.8	8-Missaukee .	5.7	10-Mecosta ...	7.4
31-Manistee	9.8			State Avg. ..	36.8					20-Oceana	16.19				
40-Mason	10.4	18-Newaygo .	14.3	44-Mecosta	38.1	46-Missaukee	16.5	13-Crawford .	1.7	28-Mason ...	18.8	22-Newaygo .	6.4	15-Wexford ...	7.8
						State Avg. ...	16.9			28-Mason ...	18.8	22-Newaygo .	6.4	15-Wexford ...	7.8
54-Mecosta ..	11.8	20-Mecosta ...	15.1	48-Mason ..	38.8	52-Wexford .	17.2	24-Newaygo	2.0	43-Newaygo	20.9	22-Oceana	6.4	16-Newaygo .	7.9
62-Missaukee	12.5	23-Wexford ...	15.5	50-Oceana .	38.9	56-Manistee	17.4	25-Missaukee	2.1	50-Mecosta .	22.2	28-Lake	6.5	21-Oceana	8.1
71-Newaygo .	13.2	37-Lake	16.9	51-Newaygo	39.0	61-Kalkaska	19.2	34-Manistee .	2.4	57-Missaukee	23.8	28-Mecosta ...	6.5	23-Crawford ..	8.2
75-Kalkaska ..	14.0	43-Kalkaska ..	18.5	57-Wexford	40.0	62-Lake	19.3	41-Lake	2.6	63-Wexford .	25.0	36-Wexford ...	6.7	29-Lake	8.5
								State Avg.	3.0						
79-Oceana	14.3	44-Mason	18.6	67-Kalkaska	41.9	65-Crawford	20.8	54-Mason	3.3	64-Manistee	25.2	42-Mason	7.0	34-Missaukee	8.6
80-Wexford ...	14.8	State Avg.	18.9	68-Manistee	42.3	67-Newaygo	21.6	56-Wexford ..	3.5	71-Kalkaska	29.5	47-Kalkaska ..	7.3	58-Kalkaska ..	9.6
		69-Missaukee	25.0												
81-Crawford ..	14.9	70-Oceana	25.4	75-Crawford	45.5	69-Mecosta .	22.2	59-Oceana	3.6	78-Lake	31.5	50-Crawford ..	7.4	71-Mason ...	10.5
												State Avg.	8.4		
82-*Lake	18.8	72-*Crawford	28.8	83-*Lake	51.4	79-Oceana ..	28.4	77-Mecosta ..	6.3	82-*Crawford	35.4	74-Manistee ..	8.9	76-Manistee	11.8

**Deaths and Crude Death Rates for the Ten Leading Causes of Death,
District Health Department #10 and
Michigan Residents, 2006
and United States Residents, 2004**

Rank MI	Cause of Death	Number of Deaths			Rate of Deaths		
		District	MI	U.S.	District	MI	U.S.
1	Heart Disease	667	24,223	652,486	250.7	239.9	222.2
2	Cancer	573	20,166	553,888	215.3	199.7	188.6
3	Stroke	151	4,746	150,074	56.7	47.0	51.1
4	Chronic Lower Respiratory Diseases	143	4,471	121,987	53.7	44.3	41.5
5	Unintentional Injuries	132	3,557	112,012	49.6	35.2	38.1
6	Diabetes Mellitus	86	2,823	73,138	32.3	28.0	24.9
7	Alzheimer's Disease	78	2,331	65,965	29.3	23.1	22.5
8	Pneumonia/Influenza	56	1,673	59,664	21.0	16.6	22.5
9	Kidney Disease	36	1,594	42,480	13.5	15.8	14.5
10	Intentional Self-harm (Suicide)	48	1,132	32,439	18.0	11.2	11.0
Sub Total		1,970	66,716	1,861,612	740.4	660.8	633.9
All Other Causes		482	19,229	536,753	181.1	190.5	182.8
Total		2,452	85,945	2,398,365	921.5	851.3	816.9

% of Births Covered by Medicaid

	1995		2000		2006	
Crawford	57.7%	149	53.2%	156	62.3%	151
Kalkaska	61.2%	214	46.9%	226	64.5%	200
Lake	61.1%	108	46.6%	133	59.5%	116
Manistee	44.3%	264	37.9%	269	50.2%	22
Mason	46.8%	327	33.0%	364	49.4%	350
Mecosta	48.3%	458	38.9%	488	44.3%	449
Missaukee	43.8%	176	35.9%	181	53.3%	182
Newaygo	43.9%	594	36.7%	633	50.1%	661
Oceana	51.3%	341	42.9%	371	62.1%	377
Wexford	46.2%	379	31.9%	382	52.7%	431

	1995	2000	2006
DHD#10	48.6%	38.7%	53.0%
Michigan	32.8%	27.7%	39.4%

Percentage of Births Covered by Medicaid

